

Heart Cell Lines Collection

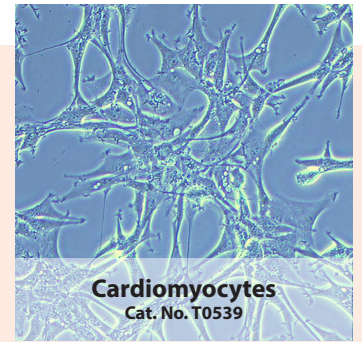


Cardiomyocytes

- T0539 Human Cardiomyocytes - CDK4, hTERT, & BMI
- T0457 Human Cardiomyocytes - SV40
- T0519 Human Cardiomyocytes - SV40
- T0538 Human Cardiomyocytes - HPV E6/E7
- T0015 Rat Cardiomyocytes

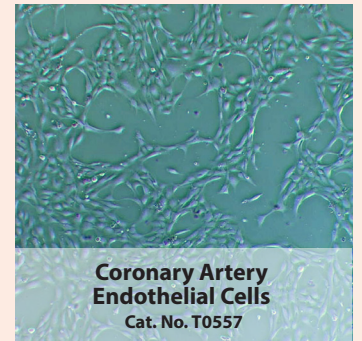
Subclavian Artery

- T0553 Human Subclavian Artery Endothelial Cells
- T0556 Human Subclavian Artery Smooth Muscle Cells



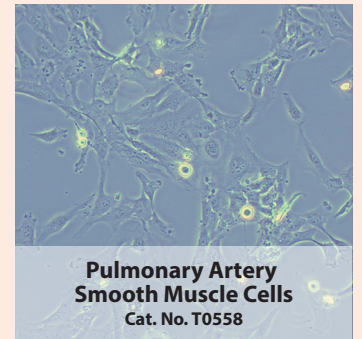
Brachiocephalic Artery

- T0513 Human Brachiocephalic Artery Endothelial Cells



Aorta

- T0143 Human Aortic Endothelial Cells
- T0515 Human Aortic Smooth Muscle Cells
- T0504 Mouse Aortic Endothelial Cells
- T0516 Feline Aortic Endothelial Cells
- T0508 Pig Aorta Cells

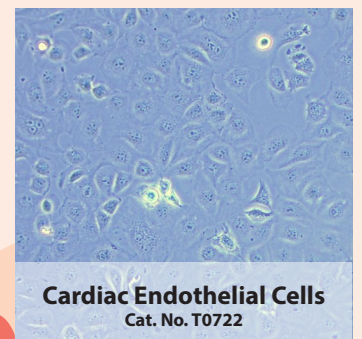


Pulmonary Artery

- T0558 Human Pulmonary Artery Smooth Muscle Cells
- T0550 Human Pulmonary Artery Endothelial Cells

Coronary Artery

- T0551 Human Coronary Artery Endothelial Cells
- T0557 Human Coronary Artery Smooth Muscle Cells



abm's Picks

- T0446 Human Cardiac Fibroblasts
- T0449 Mouse Cardiomyogenic Progenitor Cells
- T0671 Mouse Embryonic Epicardial Cells
- T0722 Mouse Cardiac Endothelial Cells
- T9258 Mouse Cardiac Microvascular Endothelial Cells
- T0444 Rainbow Trout Heart Cells

Atrioventricular

- T0670 Mouse Atrioventricular Cushion Mesenchymal Cells



To view other species and cell types available, visit:
<https://www.abmGood.com/Primary-and-Immortalized-Cell-Library-1.html>

